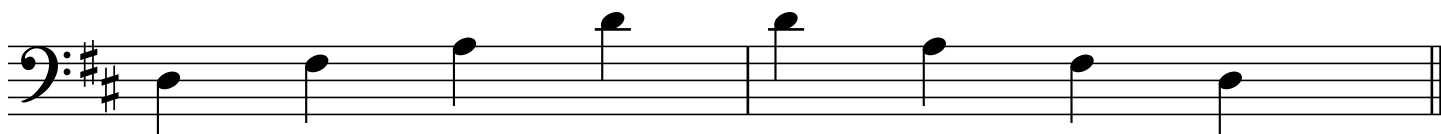
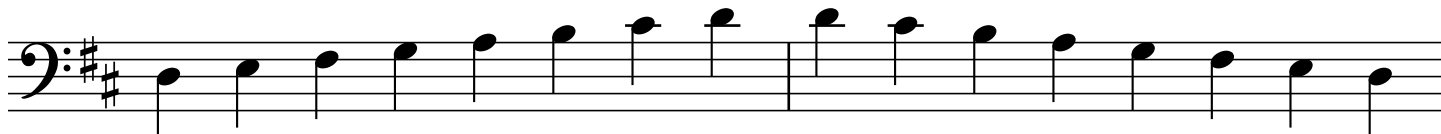


1 Octave Scales and Arpeggios

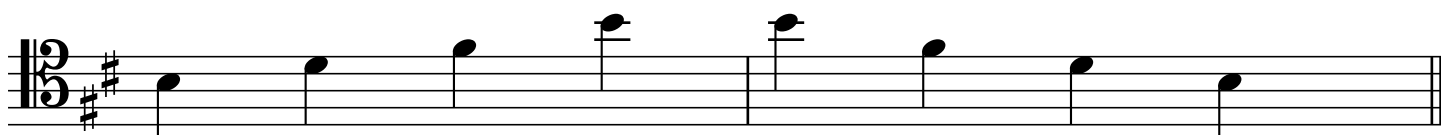
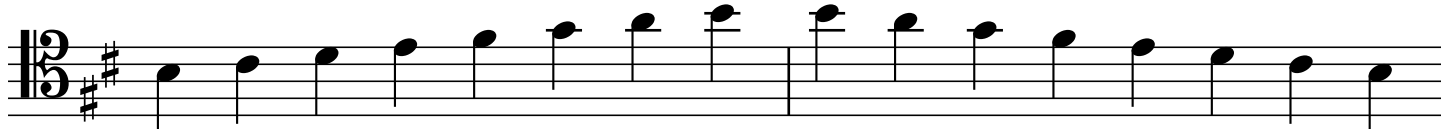
Second Octave

Sam Araya

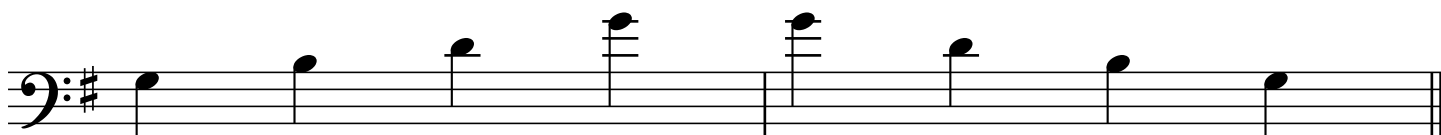
D Major



B Minor



G Major



E Minor

Two staves of musical notation for the E Minor scale. The first staff contains the ascending scale: E2, F2, G2, A2, B2, C3, D3, E3, F3, G3, A3, B3, C4, D4, E4. The second staff contains the descending scale: E4, D4, C4, B3, A3, G3, F3, E3, D3, C3, B2, A2, G2, F2, E2. The key signature is one sharp (F#).

C Major

Two staves of musical notation for the C Major scale. The first staff contains the ascending scale: C2, D2, E2, F2, G2, A2, B2, C3, D3, E3, F3, G3, A3, B3, C4. The second staff contains the descending scale: C4, B3, A3, G3, F3, E3, D3, C3, B2, A2, G2, F2, E2, D2, C2. The key signature is natural (no sharps or flats).

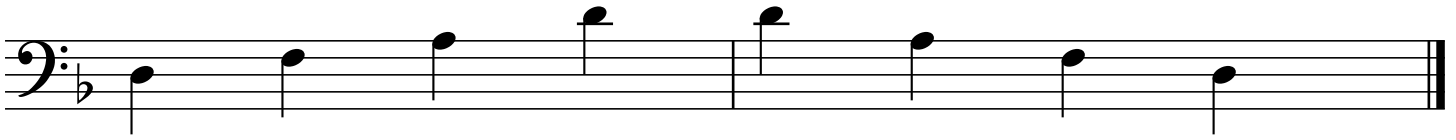
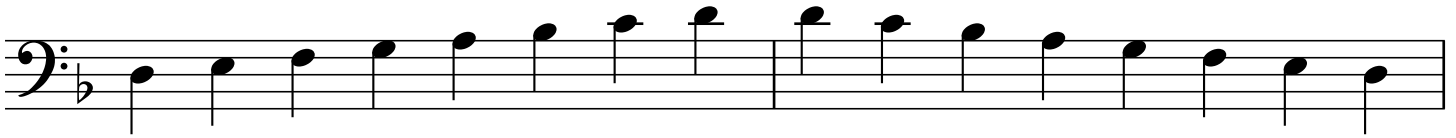
A Minor

Two staves of musical notation for the A Minor scale. The first staff contains the ascending scale: A2, B2, C3, D3, E3, F3, G3, A3, B3, C4, D4, E4, F4, G4, A4. The second staff contains the descending scale: A4, G4, F4, E4, D4, C4, B3, A3, G3, F3, E3, D3, C3, B2, A2. The key signature is one sharp (F#).

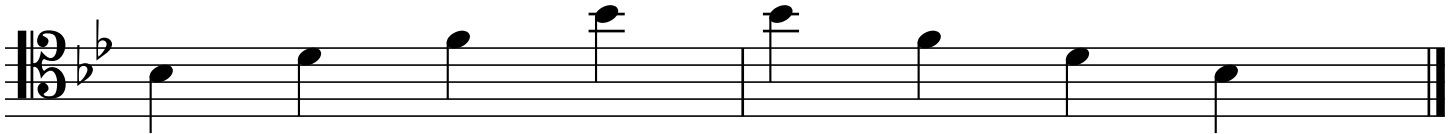
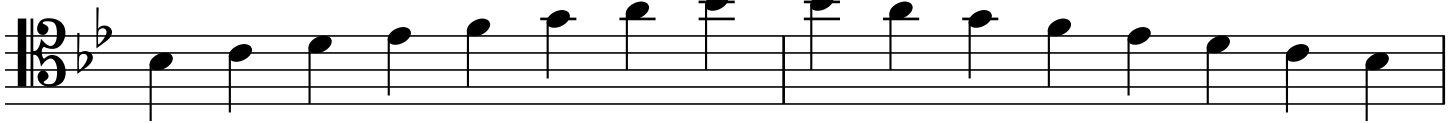
F Major

Two staves of musical notation for the F Major scale. The first staff contains the ascending scale: F2, G2, A2, B2, C3, D3, E3, F3, G3, A3, B3, C4, D4, E4, F4. The second staff contains the descending scale: F4, E4, D4, C4, B3, A3, G3, F3, E3, D3, C3, B2, A2, G2, F2. The key signature is one flat (Bb).

D Minor



Bb Major



G Minor

