

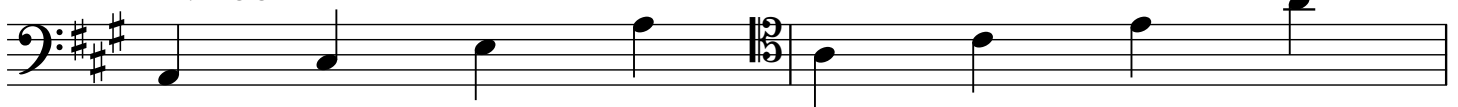
2 Octave Scales and Arpeggios

Sam Araya

A Major Scale



Arpeggio



F# Minor
Natural Minor Scale

Two staves of musical notation in bass clef with a key signature of two sharps (F# and C#). The first staff shows the ascending scale: F#2, G2, A2, B2, C3, D3, E3, F#3, G3, A3, B3, C4, D4, E4, F#4. The second staff shows the descending scale: F#4, E4, D4, C4, B3, A3, G3, F#3, E3, D3, C3, B2, A2, G2, F#2.

Harmonic Minor Scale

Two staves of musical notation in bass clef with a key signature of two sharps (F# and C#). The first staff shows the ascending scale: F#2, G2, A2, B2, C3, D3, E3, F#3, G#3, A3, B3, C4, D4, E4, F#4. The second staff shows the descending scale: F#4, E4, D4, C4, B3, A3, G3, F#3, E3, D3, C3, B2, A2, G2, F#2.

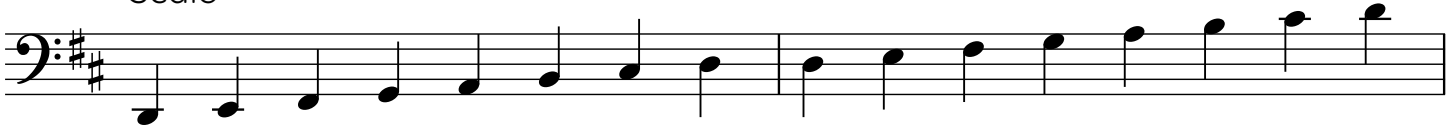
Melodic Minor Scale

Two staves of musical notation in bass clef with a key signature of two sharps (F# and C#). The first staff shows the ascending scale: F#2, G2, A2, B2, C3, D3, E3, F#3, G#3, A#3, B3, C4, D4, E4, F#4. The second staff shows the descending scale: F#4, E4, D4, C4, B3, A3, G3, F#3, E3, D3, C3, B2, A2, G2, F#2.

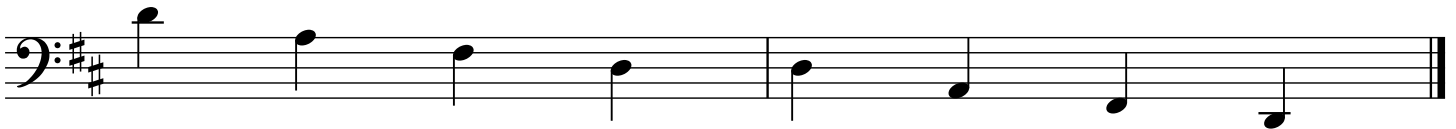
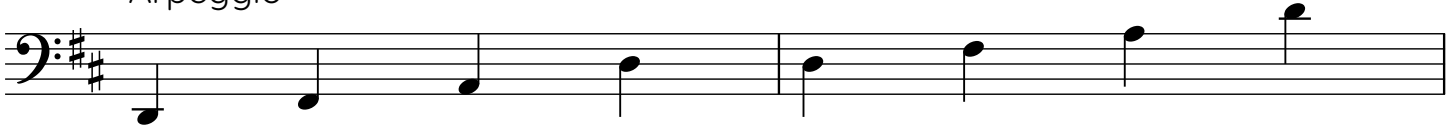
Arpeggio

Two staves of musical notation in bass clef with a key signature of two sharps (F# and C#). The first staff shows the ascending arpeggio: F#2, A2, C3, E3, F#3. The second staff shows the descending arpeggio: F#4, E4, C4, A3, F#3.

D Major
Scale



Arpeggio



B Minor
Natural Minor Scale



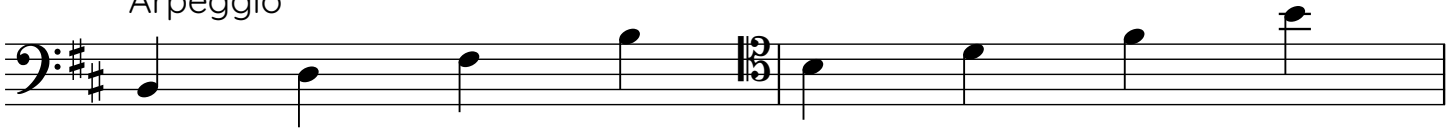
Harmonic Minor Scale



Melodic Minor Scale



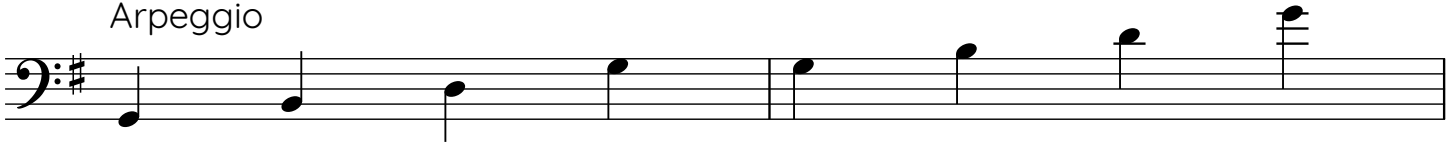
Arpeggio



G Major
Scale



Arpeggio



E Minor
Natural Minor Scale

Two staves of musical notation in bass clef with a key signature of one sharp (F#). The first staff shows the ascending scale: E2, F#2, G2, A2, B2, C3, D3, E3, F#3, G3, A3, B3, C4, D4, E4. The second staff shows the descending scale: E4, D4, C4, B3, A3, G3, F#3, E3, D3, C3, B2, A2, G2, F#2, E2.

Harmonic Minor Scale

Two staves of musical notation in bass clef with a key signature of one sharp (F#). The first staff shows the ascending scale: E2, F#2, G2, A2, B2, C#3, D3, E3, F#3, G3, A3, B3, C#4, D4, E4. The second staff shows the descending scale: E4, D4, C4, B3, A3, G3, F#3, E3, D3, C3, B2, A2, G2, F#2, E2.

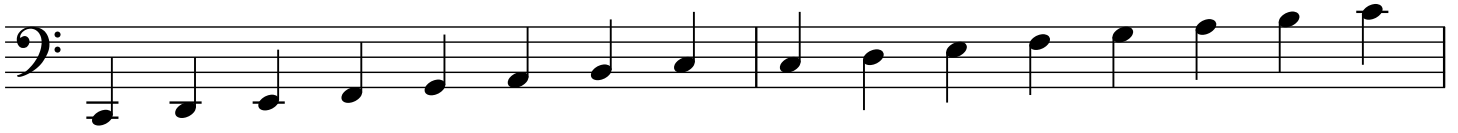
Melodic Minor Scale

Two staves of musical notation in bass clef with a key signature of one sharp (F#). The first staff shows the ascending scale: E2, F#2, G2, A2, B2, C#3, D#3, E3, F#3, G3, A3, B3, C#4, D#4, E4. The second staff shows the descending scale: E4, D4, C4, B3, A3, G3, F#3, E3, D3, C3, B2, A2, G2, F#2, E2.

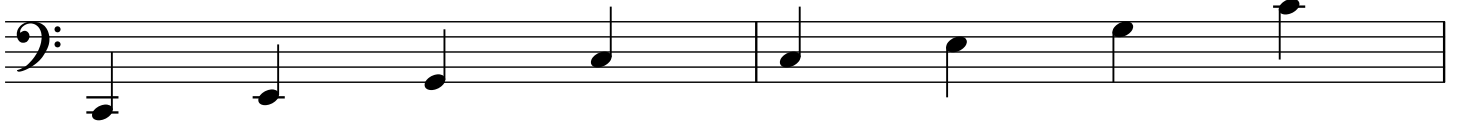
Arpeggio

Two staves of musical notation in bass clef with a key signature of one sharp (F#). The first staff shows the ascending arpeggio: E2, G2, B2, D3, E3. The second staff shows the descending arpeggio: E4, D4, B3, G3, E3.

C Major Scale



Arpeggio



A Minor
Natural Minor Scale

The musical notation for the A Minor Natural Minor Scale is presented on a single bass clef staff. The ascending sequence (left to right) consists of the notes A2, B2, C3, D3, E3, F3, G3, and A3. The descending sequence (right to left) consists of the notes G3, F3, E3, D3, C3, B2, and A2. A double bar line is placed between the two sequences.

Harmonic Minor Scale

The musical notation for the A Minor Harmonic Minor Scale is presented on a single bass clef staff. The ascending sequence (left to right) consists of the notes A2, B2, C3, D3, E3, F3, G#3, and A3. The descending sequence (right to left) consists of the notes G3, F3, E3, D3, C3, B2, and A2. A double bar line is placed between the two sequences.

Melodic Minor Scale

The musical notation for the A Minor Melodic Minor Scale is presented on a single bass clef staff. The ascending sequence (left to right) consists of the notes A2, B2, C3, D3, E3, F#3, G#3, and A3. The descending sequence (right to left) consists of the notes G3, F3, E3, D3, C3, B2, and A2. A double bar line is placed between the two sequences.

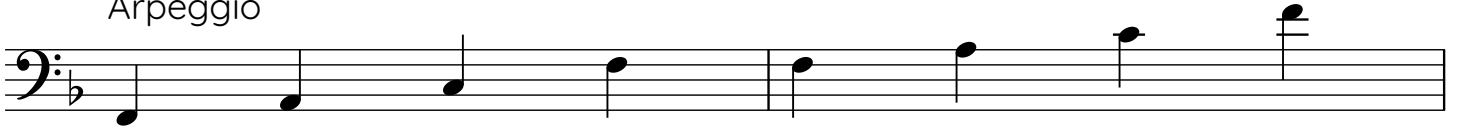
Arpeggio

The musical notation for the A Minor Arpeggio is presented on a single bass clef staff. The ascending sequence (left to right) consists of the notes A2, C3, E3, and G3. The descending sequence (right to left) consists of the notes G3, E3, C3, and A2. A double bar line is placed between the two sequences.

F Major
Scale



Arpeggio



D Minor
Natural Minor Scale

Two staves of musical notation in bass clef with a key signature of one flat (Bb). The first staff shows the ascending scale: D2, E2, F2, G2, A2, Bb2, C3, D3, E3, F3, G3, A3, Bb3, C4, D4. The second staff shows the descending scale: D4, C4, Bb3, A3, G3, F3, E3, D3, C3, Bb2, A2, G2, F2, E2, D2.

Harmonic Minor Scale

Two staves of musical notation in bass clef with a key signature of one flat (Bb). The first staff shows the ascending scale: D2, E2, F2, G2, A2, Bb2, C#3, D3, E3, F3, G3, A3, Bb3, C#4, D4. The second staff shows the descending scale: D4, C#4, Bb3, A3, G3, F3, E3, D3, C3, Bb2, A2, G2, F2, E2, D2.

Melodic Minor Scale

Two staves of musical notation in bass clef with a key signature of one flat (Bb). The first staff shows the ascending scale: D2, E2, F2, G2, A2, Bb2, C#3, D#3, E3, F3, G3, A3, Bb3, C#4, D4. The second staff shows the descending scale: D4, C#4, Bb3, A3, G3, F3, E3, D3, C3, Bb2, A2, G2, F2, E2, D2.

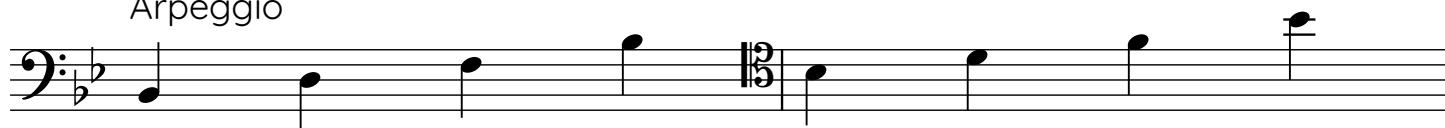
Arpeggio

Two staves of musical notation in bass clef with a key signature of one flat (Bb). The first staff shows the ascending arpeggio: D2, F2, Bb2, D3. The second staff shows the descending arpeggio: D3, Bb2, F2, D2.

B \flat Major
Scale



Arpeggio



G Minor Natural Minor Scale

Two staves of musical notation in bass clef, G minor key. The first staff shows the ascending scale: G2, A2, B2, C3, D3, E3, F3, G3, A3, B3, C4, D4, E4, F4, G4. The second staff shows the descending scale: G4, F4, E4, D4, C4, B3, A3, G3, F3, E3, D3, C3, B2, A2, G2.

Harmonic Minor Scale

Two staves of musical notation in bass clef, G minor key. The first staff shows the ascending scale: G2, A2, B2, C3, D3, E3, F#3, G3, A3, B3, C4, D4, E4, F#4, G4. The second staff shows the descending scale: G4, F#4, E4, D4, C4, B3, A3, G3, F3, E3, D3, C3, B2, A2, G2.

Melodic Minor Scale

Two staves of musical notation in bass clef, G minor key. The first staff shows the ascending scale: G2, A2, B2, C3, D3, E3, F#3, G3, A3, B3, C4, D4, E4, F#4, G4. The second staff shows the descending scale: G4, F4, E4, D4, C4, B3, A3, G3, F3, E3, D3, C3, B2, A2, G2.

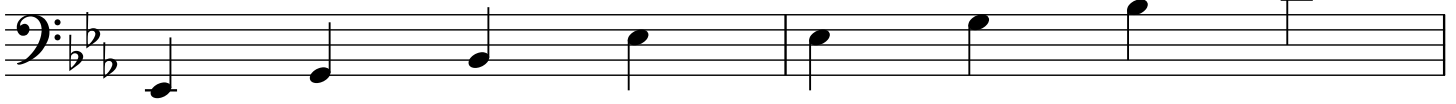
Arpeggio

Two staves of musical notation in bass clef, G minor key. The first staff shows the ascending arpeggio: G2, B2, D3, G3, B3, D4, G4. The second staff shows the descending arpeggio: G4, B3, D3, G3, B2, D2, G2.

E \flat Major
Scale



Arpeggio



C Minor

Natural Minor Scale

Ascending: C4, D4, E4, F4, G4, A4, Bb4, C5
Descending: C5, Bb4, A4, G4, F4, E4, D4, C4

Harmonic Minor Scale

Ascending: C4, D4, E4, F4, G4, A4, Bb4, B4, C5
Descending: C5, B4, Bb4, A4, G4, F4, E4, D4, C4

Melodic Minor Scale

Ascending: C4, D4, E4, F4, G4, A4, Bb4, B4, C5
Descending: C5, B4, A4, G4, F4, E4, D4, C4

Arpeggio

Ascending: C4, E4, G4, C5
Descending: C5, G4, E4, C4