

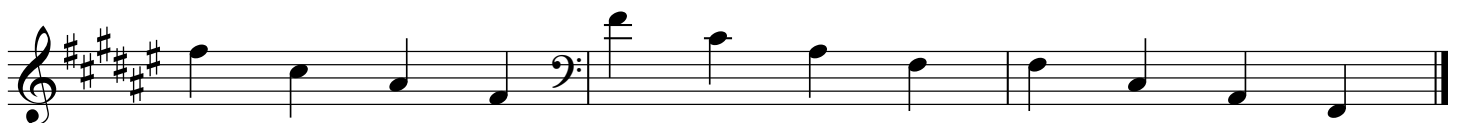
3 Octave Scales and Arpeggios

Sam Araya

F# Major
Scale



Arpeggio



D# Minor
Natural Minor Scale

First part of the D# Minor Natural Minor Scale in bass clef, showing the descending sequence of notes: D#, C#, B, A, G, F, E, D, C#, B, A, G, F, E, D.

Second part of the D# Minor Natural Minor Scale in treble clef, showing the ascending sequence of notes: D, E, F, G, A, B, C#, D, C#, B, A, G, F, E, D.

Harmonic Minor Scale

First part of the D# Minor Harmonic Minor Scale in bass clef, showing the descending sequence of notes: D#, C#, B, A, G, F, E, D, C#, B, A, G, F, E, D. The notes C# and B are marked with an 'x' to indicate the raised 7th degree.

Second part of the D# Minor Harmonic Minor Scale in treble clef, showing the ascending sequence of notes: D, E, F, G, A, B, C#, D, C#, B, A, G, F, E, D. The notes C# and B are marked with an 'x' to indicate the raised 7th degree.

Melodic Minor Scale

First part of the D# Minor Melodic Minor Scale in bass clef, showing the descending sequence of notes: D#, C#, B, A, G, F, E, D, C#, B, A, G, F, E, D. The notes C# and B are marked with an 'x' to indicate the raised 7th degree.

Second part of the D# Minor Melodic Minor Scale in treble clef, showing the ascending sequence of notes: D, E, F, G, A, B, C#, D, C#, B, A, G, F, E, D.

Arpeggio

First part of the D# Minor Arpeggio in bass clef, showing the descending sequence of notes: D#, C#, B, A, G, F, E, D, C#, B, A, G, F, E, D.

Second part of the D# Minor Arpeggio in treble clef, showing the ascending sequence of notes: D, E, F, G, A, B, C#, D, C#, B, A, G, F, E, D.

B Major
Scale

First staff of the B Major Scale in bass clef. It shows the ascending sequence of notes: B2, C3, D3, E3, F#3, G#3, A3, B3. This is followed by a double bar line and the descending sequence: A3, G#3, F#3, E3, D3, C3, B2.

Second staff of the B Major Scale in treble clef. It shows the ascending sequence of notes: B3, C4, D4, E4, F#4, G#4, A4, B4. This is followed by a double bar line and the descending sequence: A4, G#4, F#4, E4, D4, C4, B3.

Arpeggio

Third staff of the B Major Arpeggio in bass clef. It shows the ascending sequence of notes: B2, D3, F#3, B3. This is followed by a double bar line and the descending sequence: A3, G#3, F#3, E3, D3, C3, B2.

Fourth staff of the B Major Arpeggio in treble clef. It shows the ascending sequence of notes: B3, D4, F#4, B4. This is followed by a double bar line and the descending sequence: A4, G#4, F#4, E4, D4, C4, B3.

G# Minor
Natural Minor Scale

First staff of the G# Minor Natural Minor Scale, starting in the bass clef. The key signature has four sharps (F#, C#, G#, D#). The scale is written in a single line, ascending and then descending.

Second staff of the G# Minor Natural Minor Scale, starting in the treble clef. The scale continues from the previous staff, ascending and then descending.

Harmonic Minor Scale

First staff of the G# Minor Harmonic Minor Scale, starting in the bass clef. The key signature has four sharps. The scale is written in a single line, ascending and then descending. The notes G# and D# are marked with an asterisk (*).

Second staff of the G# Minor Harmonic Minor Scale, starting in the treble clef. The scale continues from the previous staff, ascending and then descending. The notes G# and D# are marked with an asterisk (*).

Melodic Minor Scale

First staff of the G# Minor Melodic Minor Scale, starting in the bass clef. The key signature has four sharps. The scale is written in a single line, ascending and then descending. The notes G# and D# are marked with an asterisk (*).

Second staff of the G# Minor Melodic Minor Scale, starting in the treble clef. The scale continues from the previous staff, ascending and then descending. The notes G# and D# are marked with an asterisk (*).

Arpeggio

First staff of the G# Minor Arpeggio, starting in the bass clef. The key signature has four sharps. The notes G#, B, and D# are marked with an asterisk (*).

Second staff of the G# Minor Arpeggio, starting in the treble clef. The notes G#, B, and D# are marked with an asterisk (*).

E Major
Scale



Arpeggio



C# Minor
Natural Minor Scale

Ascending: C#2, D#3, E4, F#4, G#4, A5, B5, C#6. Descending: C#6, B5, A5, G#4, F#4, E4, D#3, C#2.

Ascending: C#6, B5, A5, G#4, F#4, E4, D#3, C#2. Descending: C#2, D#3, E4, F#4, G#4, A5, B5, C#6.

Harmonic Minor Scale

Ascending: C#2, D#3, E4, F#4, G#4, A5, B5, C#6, G#4, F#4, E4, D#3, C#2. Descending: C#6, B5, A5, G#4, F#4, E4, D#3, C#2.

Ascending: C#6, B5, A5, G#4, F#4, E4, D#3, C#2. Descending: C#2, D#3, E4, F#4, G#4, A5, B5, C#6, G#4, F#4, E4, D#3, C#2.

Melodic Minor Scale

Ascending: C#2, D#3, E4, F#4, G#4, A5, B5, C#6, G#4, F#4, E4, D#3, C#2. Descending: C#6, B5, A5, G#4, F#4, E4, D#3, C#2.

Ascending: C#6, B5, A5, G#4, F#4, E4, D#3, C#2. Descending: C#2, D#3, E4, F#4, G#4, A5, B5, C#6, G#4, F#4, E4, D#3, C#2.

Arpeggio

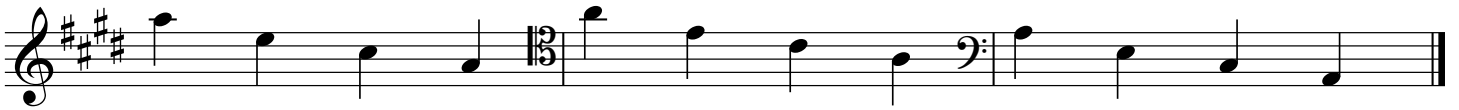
Ascending: C#2, E4, G#4, C#6. Descending: C#6, G#4, E4, C#2.

Ascending: C#6, G#4, E4, C#2. Descending: C#2, E4, G#4, C#6.

A Major
Scale



Arpeggio



F# Minor
Natural Minor Scale

First staff of the F# Minor Natural Minor Scale, bass clef. The scale begins on F# and proceeds through G, A, B, C, D, E, F, G, A, B, C, D, E, F, G.

Second staff of the F# Minor Natural Minor Scale, treble clef. The scale continues from the first staff, showing the notes F, G, A, B, C, D, E, F, G, A, B, C, D, E, F, G.

Harmonic Minor Scale

First staff of the F# Minor Harmonic Minor Scale, bass clef. The scale begins on F# and proceeds through G, A, B, C, D, E, F#, G, A, B, C, D, E, F, G.

Second staff of the F# Minor Harmonic Minor Scale, treble clef. The scale continues from the first staff, showing the notes F#, G, A, B, C, D, E, F, G, A, B, C, D, E, F, G.

Melodic Minor Scale

First staff of the F# Minor Melodic Minor Scale, bass clef. The scale begins on F# and proceeds through G, A, B, C, D, E, F#, G, A, B, C, D, E, F#, G.

Second staff of the F# Minor Melodic Minor Scale, treble clef. The scale continues from the first staff, showing the notes F#, G, A, B, C, D, E, F, G, A, B, C, D, E, F#, G.

Arpeggio

First staff of the F# Minor Arpeggio, bass clef. The arpeggio begins on F# and proceeds through G, A, B, C, D, E, F, G, A, B, C, D, E, F, G.

Second staff of the F# Minor Arpeggio, treble clef. The arpeggio continues from the first staff, showing the notes F, G, A, B, C, D, E, F, G, A, B, C, D, E, F, G.

D Major
Scale



Arpeggio



B Minor
Natural Minor Scale

The musical notation for the B Minor Natural Minor Scale is presented in two systems. The first system shows the ascending scale in the bass clef (left) and the descending scale in the treble clef (right). The second system shows the ascending scale in the treble clef (left) and the descending scale in the bass clef (right). The key signature consists of two sharps (F# and C#), and the scale is written in a 1:1 ratio of ascending to descending notes.

Harmonic Minor Scale

The musical notation for the B Minor Harmonic Minor Scale is presented in two systems. The first system shows the ascending scale in the bass clef (left) and the descending scale in the treble clef (right). The second system shows the ascending scale in the treble clef (left) and the descending scale in the bass clef (right). The key signature consists of two sharps (F# and C#), and the scale is written in a 1:1 ratio of ascending to descending notes. The notes are B, C, D, E, F#, G, A, B.

Melodic Minor Scale

The musical notation for the B Minor Melodic Minor Scale is presented in two systems. The first system shows the ascending scale in the bass clef (left) and the descending scale in the treble clef (right). The second system shows the ascending scale in the treble clef (left) and the descending scale in the bass clef (right). The key signature consists of two sharps (F# and C#), and the scale is written in a 1:1 ratio of ascending to descending notes. The notes are B, C, D, E, F#, G#, A, B.

Arpeggio

The musical notation for the B Minor Arpeggio is presented in two systems. The first system shows the ascending arpeggio in the bass clef (left) and the descending arpeggio in the treble clef (right). The second system shows the ascending arpeggio in the treble clef (left) and the descending arpeggio in the bass clef (right). The key signature consists of two sharps (F# and C#), and the arpeggio is written in a 1:1 ratio of ascending to descending notes.

G Major
Scale

First staff of the G Major Scale in bass clef. The key signature has one sharp (F#). The scale is written in quarter notes, ascending from G2 to G3 and then descending from G3 to G2.

Second staff of the G Major Scale in treble clef. The key signature has one sharp (F#). The scale is written in quarter notes, ascending from G4 to G5 and then descending from G5 to G4.

Arpeggio

Third staff of the G Major Arpeggio in bass clef. The key signature has one sharp (F#). The arpeggio is written in quarter notes, ascending from G2 to G3 and then descending from G3 to G2.

Fourth staff of the G Major Arpeggio in treble clef. The key signature has one sharp (F#). The arpeggio is written in quarter notes, ascending from G4 to G5 and then descending from G5 to G4.

E Minor
Natural Minor Scale

Musical notation for the E Minor Natural Minor Scale. The first staff is in bass clef with a key signature of one sharp (F#). The scale is written in two directions: ascending (E, F#, G, A, B, C, D, E) and descending (E, D, C, B, A, G, F#, E). The second staff is in treble clef with the same key signature, showing the ascending and descending scales.

Harmonic Minor Scale

Musical notation for the E Minor Harmonic Minor Scale. The first staff is in bass clef with a key signature of one sharp (F#). The scale is written in two directions: ascending (E, F#, G, A, B, C, D, E, F#, G) and descending (E, D, C, B, A, G, F#, E). The second staff is in treble clef with the same key signature, showing the ascending and descending scales.

Melodic Minor Scale

Musical notation for the E Minor Melodic Minor Scale. The first staff is in bass clef with a key signature of one sharp (F#). The scale is written in two directions: ascending (E, F#, G, A, B, C, D, E, F#, G, A, B) and descending (E, D, C, B, A, G, F#, E). The second staff is in treble clef with the same key signature, showing the ascending and descending scales.

Arpeggio

Musical notation for the E Minor Arpeggio. The first staff is in bass clef with a key signature of one sharp (F#). The notes E, G, B, and D are written in ascending order. The second staff is in treble clef with the same key signature, showing the notes E, G, B, and D in descending order.

C Major
Scale

The first system of the C Major Scale is written on two staves. The left staff is in bass clef and contains the first eight notes of the scale: C2, C3, D3, E3, F3, G3, A3, B3. The right staff is in treble clef and contains the last eight notes: C4, D4, E4, F4, G4, A4, B4, C5. A double bar line is placed after the eighth note of each staff.

Arpeggio

The first system of the C Major Arpeggio is written on two staves. The left staff is in bass clef and contains the notes C2, E3, G3, C4, E4, G4, B4, C5. The right staff is in treble clef and contains the notes C4, E4, G4, C5, E5, G5, B5, C6. A double bar line is placed after the eighth note of each staff.

A Minor
Natural Minor Scale

The first system shows the A Natural Minor Scale in bass clef, ascending from A2 to A3. The second system shows the scale in treble clef, ascending from A3 to A4. The third system shows the scale in treble clef, descending from A4 to A3. The fourth system shows the scale in bass clef, descending from A3 to A2.

Harmonic Minor Scale

The first system shows the A Harmonic Minor Scale in bass clef, ascending from A2 to A3 with a raised G. The second system shows the scale in treble clef, ascending from A3 to A4 with a raised G. The third system shows the scale in treble clef, descending from A4 to A3 with a raised G. The fourth system shows the scale in bass clef, descending from A3 to A2 with a raised G.

Melodic Minor Scale

The first system shows the A Melodic Minor Scale in bass clef, ascending from A2 to A3 with raised G and F. The second system shows the scale in treble clef, ascending from A3 to A4 with raised G and F. The third system shows the scale in treble clef, descending from A4 to A3 with natural G and F. The fourth system shows the scale in bass clef, descending from A3 to A2 with natural G and F.

Arpeggio

The first system shows the A Minor Arpeggio in bass clef, ascending from A2 to A3. The second system shows the arpeggio in treble clef, ascending from A3 to A4. The third system shows the arpeggio in treble clef, descending from A4 to A3. The fourth system shows the arpeggio in bass clef, descending from A3 to A2.

F Major
Scale



Arpeggio



D Minor
Natural Minor Scale



Harmonic Minor Scale



Melodic Minor Scale



Arpeggio



B \flat Major
Scale



Arpeggio



G Minor
Natural Minor Scale

Two staves of musical notation for the G Minor Natural Minor Scale. The first staff is in bass clef, showing the scale ascending from G2 to G3. The second staff is in treble clef, showing the scale descending from G3 to G2. The key signature has two flats (Bb and Eb).

Harmonic Minor Scale

Two staves of musical notation for the G Minor Harmonic Minor Scale. The first staff is in bass clef, showing the scale ascending from G2 to G3 with a raised seventh degree (F#). The second staff is in treble clef, showing the scale descending from G3 to G2 with a raised seventh degree (F#).

Melodic Minor Scale

Two staves of musical notation for the G Minor Melodic Minor Scale. The first staff is in bass clef, showing the scale ascending from G2 to G3 with a raised sixth degree (F#) and a raised seventh degree (F#). The second staff is in treble clef, showing the scale descending from G3 to G2 with a raised sixth degree (F#) and a raised seventh degree (F#).

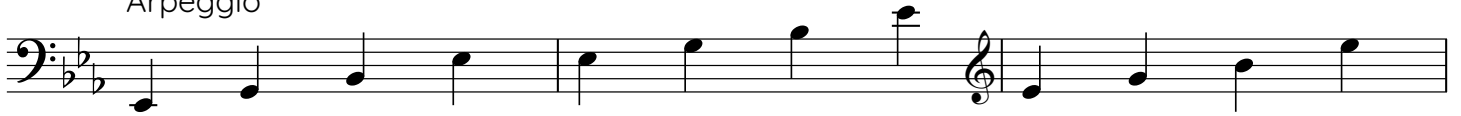
Arpeggio

Two staves of musical notation for the G Minor Arpeggio. The first staff is in bass clef, showing the notes G2, Bb2, and Eb3. The second staff is in treble clef, showing the notes G3, Bb3, and Eb4.

E \flat Major
Scale



Arpeggio



C Minor
Natural Minor Scale

Musical notation for the C Minor Natural Minor Scale. The first staff is in bass clef, showing the ascending scale from C2 to C3. The second staff is in treble clef, showing the descending scale from C3 to C2. The key signature has two flats (Bb and Eb).

Harmonic Minor Scale

Musical notation for the C Minor Harmonic Minor Scale. The first staff is in bass clef, showing the ascending scale with a raised seventh degree (Bb to B). The second staff is in treble clef, showing the descending scale with a raised seventh degree (B to Bb). The key signature has two flats (Bb and Eb).

Melodic Minor Scale

Musical notation for the C Minor Melodic Minor Scale. The first staff is in bass clef, showing the ascending scale with raised sixth and seventh degrees (Bb to B, Eb to E). The second staff is in treble clef, showing the descending scale with a raised seventh degree (B to Bb). The key signature has two flats (Bb and Eb).

Arpeggio

Musical notation for the C Minor Arpeggio. The first staff is in bass clef, showing the ascending arpeggio (C2, Eb2, Gb2, Bb2). The second staff is in treble clef, showing the descending arpeggio (C3, Bb2, Gb2, Eb2). The key signature has two flats (Bb and Eb).

A \flat Major
Scale



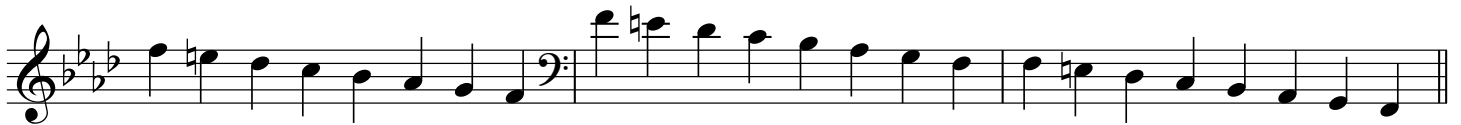
Arpeggio



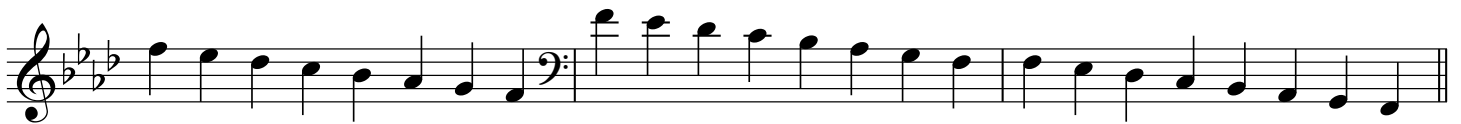
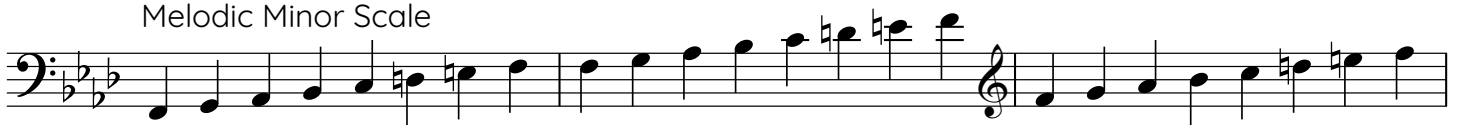
F Minor
Natural Minor Scale



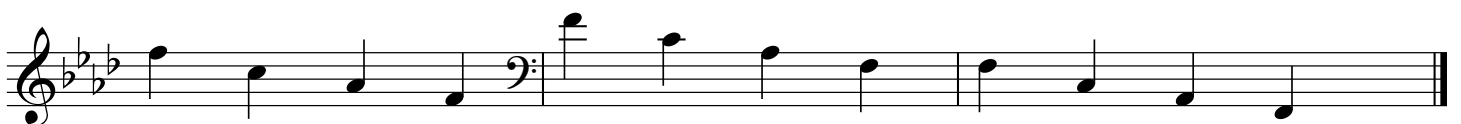
Harmonic Minor Scale



Melodic Minor Scale



Arpeggio



D \flat Major
Scale



Arpeggio



B \flat Minor
Natural Minor Scale

Harmonic Minor Scale



Melodic Minor Scale



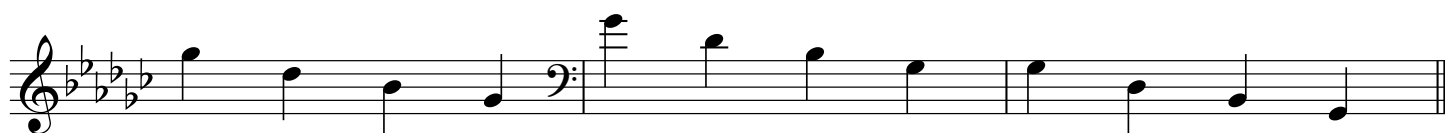
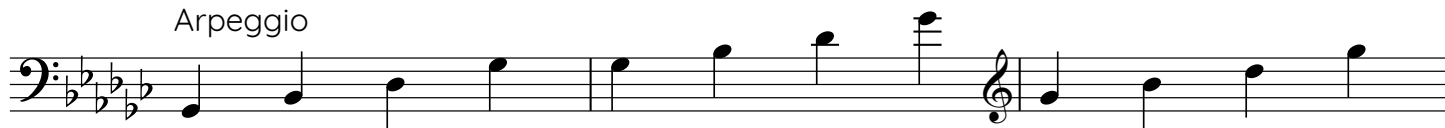
Arpeggio



G \flat Major
Scale



Arpeggio



E \flat Minor
Natural Minor Scale



Harmonic Minor Scale



Melodic Minor Scale



Arpeggio

